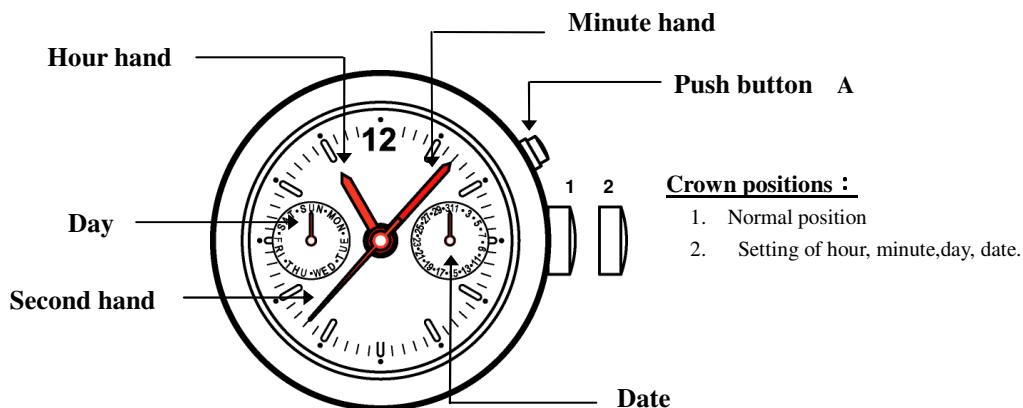


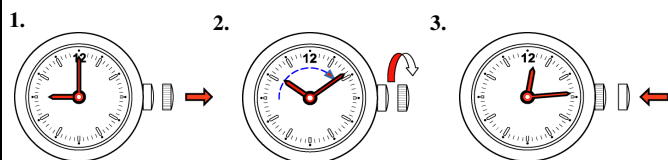
Calibre : 9231 / 1890

Function : Hour · Minute & Second hands, Date, day

Illustration

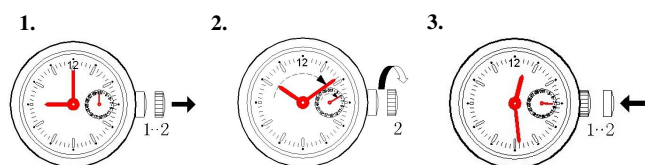


A. Set the time - Hour · Minute

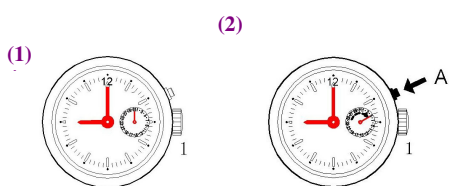


1. Pull the crown to position 2.
2. Turn the crown clockwise to set the hour / minute hands to the desired time.
3. Push the crown back to position 1.

B. Set the Date



1. Pull the crown to position 2.
2. Turn the crown clockwise. Continue to turn the crown until the desired date is set.
3. Push the crown back to position 1.

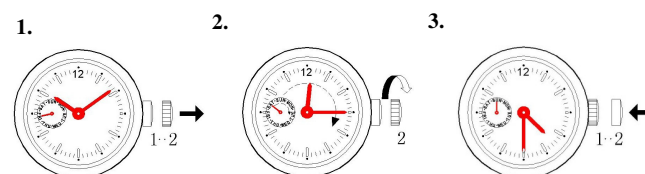


Quick Correction of Date :

1. Set the crown to position 1.
2. Press the button A step-by-step to advance the date until the desired date is set.

!! Attention !!: The date advances at 00:00 midnight, not 12:00 noon.

C. Set the Day



1. Pull the crown to position 2.
2. Turn the crown clockwise to advance the day hand until the desired day is set. The day hand will advance one day when 04:30 in the morning is reached.
3. Push the crown back to position 1.

Battery : 371 - SR 920 SW